

**Tillbridge Solar Project
EN010142**

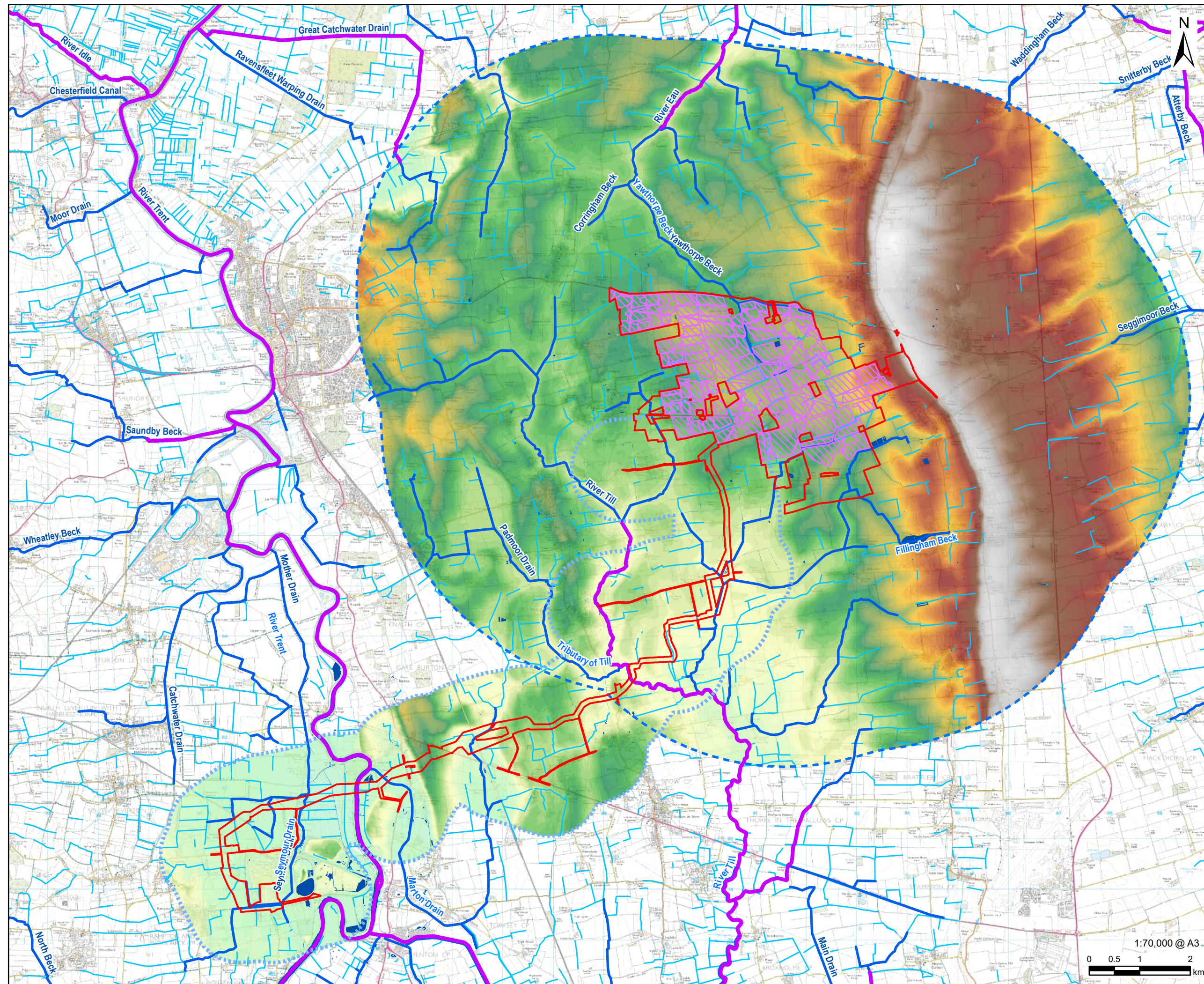
**Volume 6
Environmental Statement**
Figure 12-5: Topography and Watercourses
Document Reference: EN010142/APP/6.3

**Regulation 5(2)(a)
Infrastructure Planning (Applications: Prescribed Forms and
Procedure) Regulations 2009**

**December 2024
Revision Number: 01**

tillbridgesolar.com

Revision: 01 Drawn: LL Checked: CW Approved: AT Date: 2024-12-05
Filename: \\na.aecomnet.com\fs\EMEA\London-UK\ON06\Legacy\UK\ON06\PPF\SW001-V1\DP\Library\GIS_DATA\Projects\Greta III\Layout\Tillbridge Solar\ES\Chapter 12 - Landscape\Figure 12-5_Topography and Watercourses.mxd



AECOM

PROJECT
Tillbridge Solar Project

CLIENT
Tillbridge Solar Ltd

CONSULTANT
Aldgate Tower
2, Leman Street
London, E1 8FA
United Kingdom
T +44-0207-645-2000

LEGEND

- Order limits
- Indicative Solar Panel Boundary
- Principal Site - 5km Buffer
- Cable Route Corridor - 1km Buffer
- Main River
- Ordinary Watercourse
- Surface Water
- Waterbody

Elevation (m)
High: 73
Low: 0

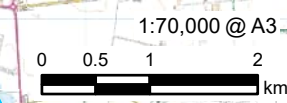
NOTES
Contains Ordnance Survey Data © Crown Copyright and database right 2024.
Ordnance Survey 0100031673.
Contains public sector information licensed under the Open Government Licence v3.0. © Natural England material is reproduced with the permission of Natural England 2024.
© Environment Agency copyright and/or database right 2024. All rights reserved.
Some features of this map are based on digital spatial data from the Centre for Ecology & Hydrology, © NERC (CEH). © Crown copyright and database rights 2024
Ordnance Survey 100024198.

ISSUE PURPOSE
DCO Submission

PROJECT NUMBER
60677969

FIGURE TITLE
Topography and Watercourses

FIGURE NUMBER
Figure 12-5



This drawing has been prepared for the use of AECOM's client. It may not be used, modified, reproduced or relied upon by any party that uses or relies on this drawing without AECOM's express written consent. Do not scale this document. All measurements must be obtained from the stated dimensions.